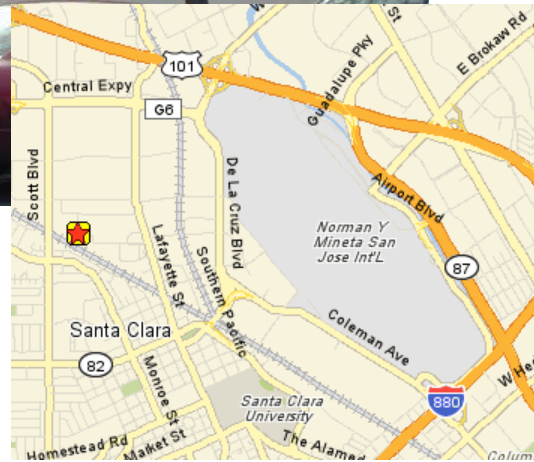
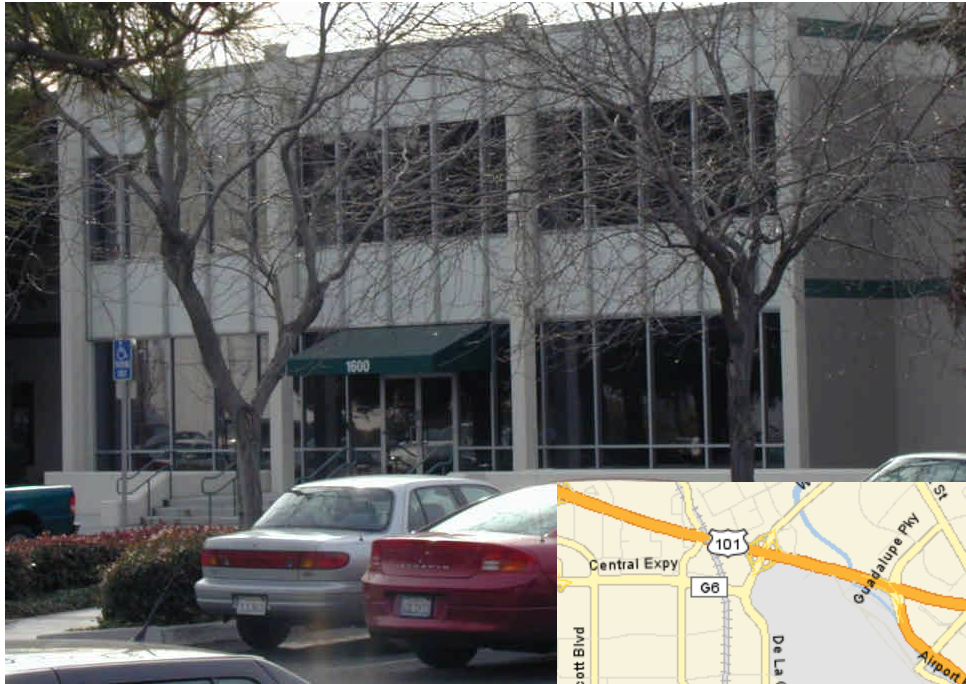


MISSION WEST PROPERTIES, Inc.

1600 Memorex, Santa Clara



- Available Space: 88,035 sf
- Office Space: 30,414 sf
- High-Bay Warehouse: 44,120 sf
- Convenient Access to 101, 880, 87 and San Jose Airport
- Santa Clara Utilities
- Available Now

For Further Information Please Contact:

Ray Marino
408-725-7632

rmarino@missionwest.com

Carl Berg
408-725-0700

berg@missionwest.com

