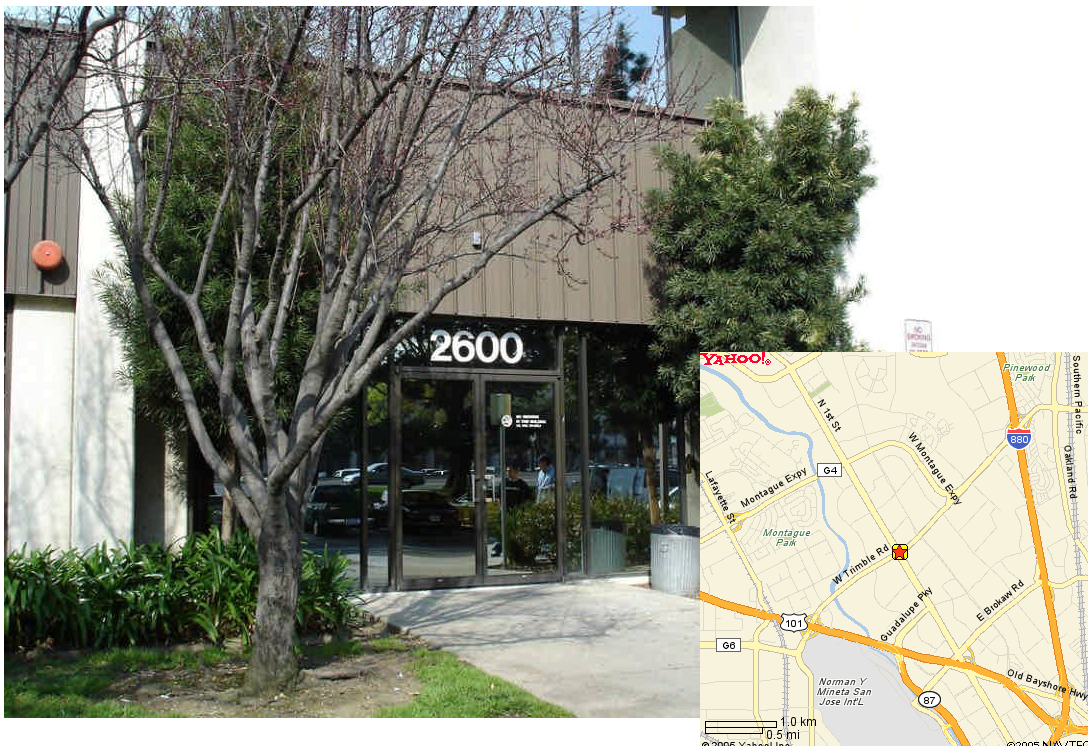


MISSION WEST PROPERTIES, Inc.

2600 N. 1st Street, San Jose



Available Space: 58,512 sf

- Divisible to 22,684sf+/- (2nd Floor), Expandable to 74,601 +/- sf
- Available Now
- Parking 4/1,000
- Power 2,500amps @ 480 volts
- Rent: \$0.90 psf/mo "NNN"
- TI Allowance: Carpet and Interior Paint
- "NNN" \$0.13 psf/mo (Property Taxes, Insurance, and Gardening)
- Access via lockbox
- Excellent Corner Location for Signage @ Trimble and N. 1st St.
- Easy Access to Highways 101/880, Light Rail, Mineta (San Jose) Airport and Downtown San Jose

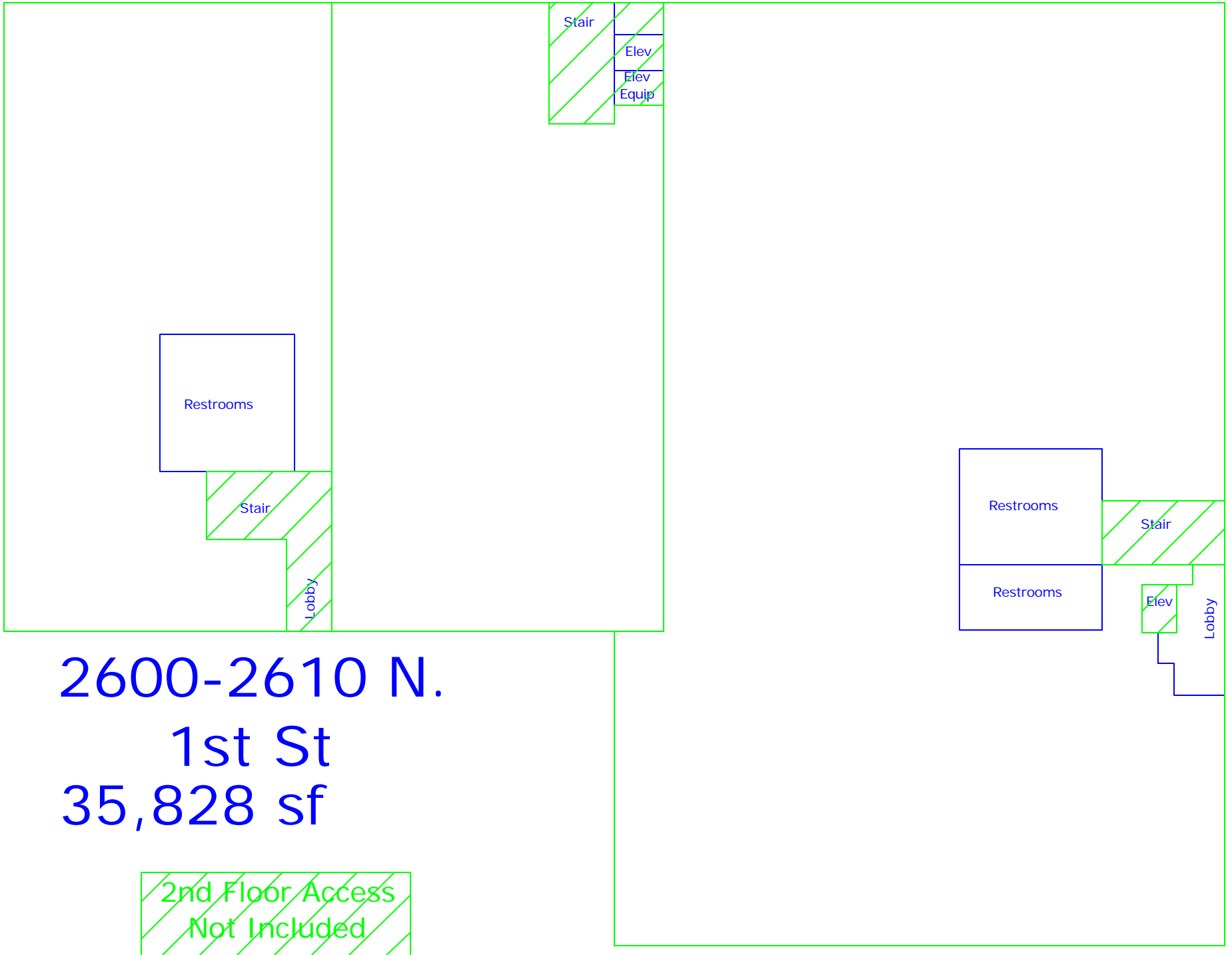
For Further Information Please Contact:

Carl Berg
408-725-0700

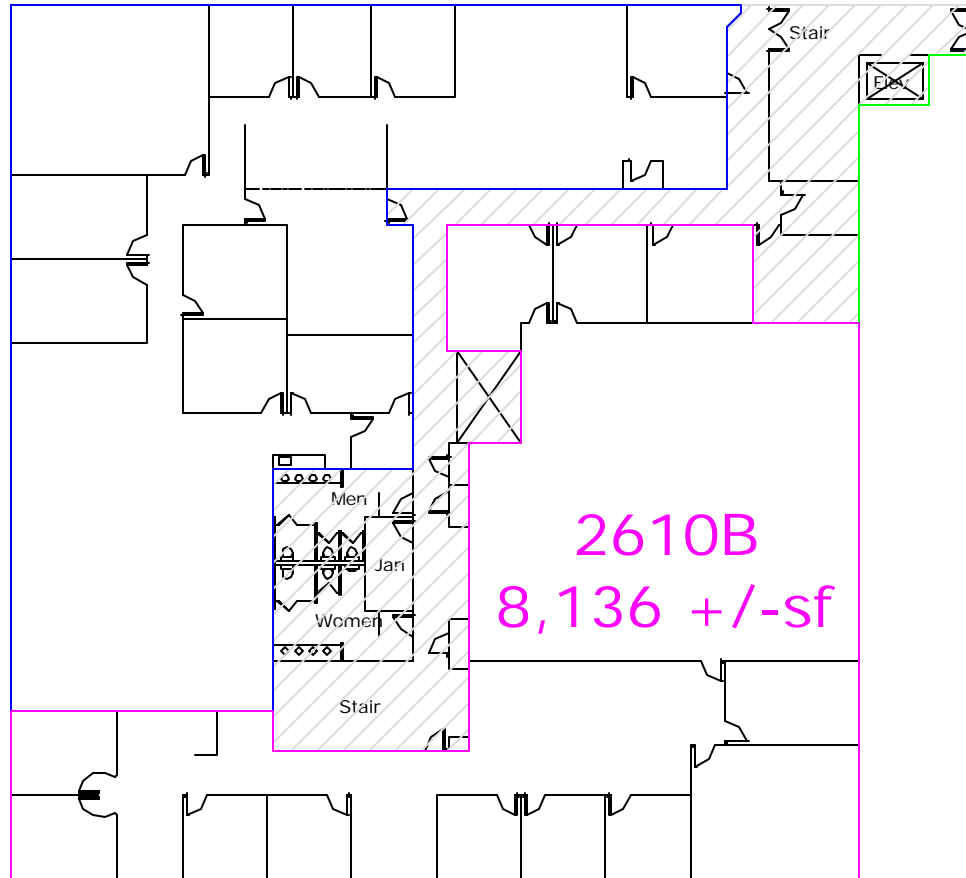
berg@missionwest.com

Ray Marino
408-725-7632

rmarino@missionwest.com



2610A
7,953 +/-sf



2610B
8,136 +/-sf

2600-2610 N. 1st St
2nd Floor

2600A
22,684 +/-sf

