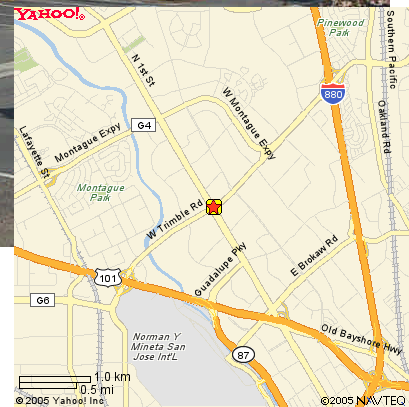


MISSION WEST PROPERTIES, Inc.

2600-2610 N. 1st Street, San Jose



Available Space: 74,601 sf

- Divisible to 8,000sf+/- (2nd Floor)
- Available Now
- Parking 3.5/1,000
- Power 2,500amps @ 480 volts
- Remodel to suit Tenant's Requirements
- "NNN" \$0.138 psf/mo (Property Taxes, Insurance, and Gardening)
- Access via lockbox
- Excellent Corner Location for Signage @ Trimble and N. 1st St.
- Easy Access to Highways 101/880, Light Rail, Mineta (San Jose) Airport and Downtown San Jose

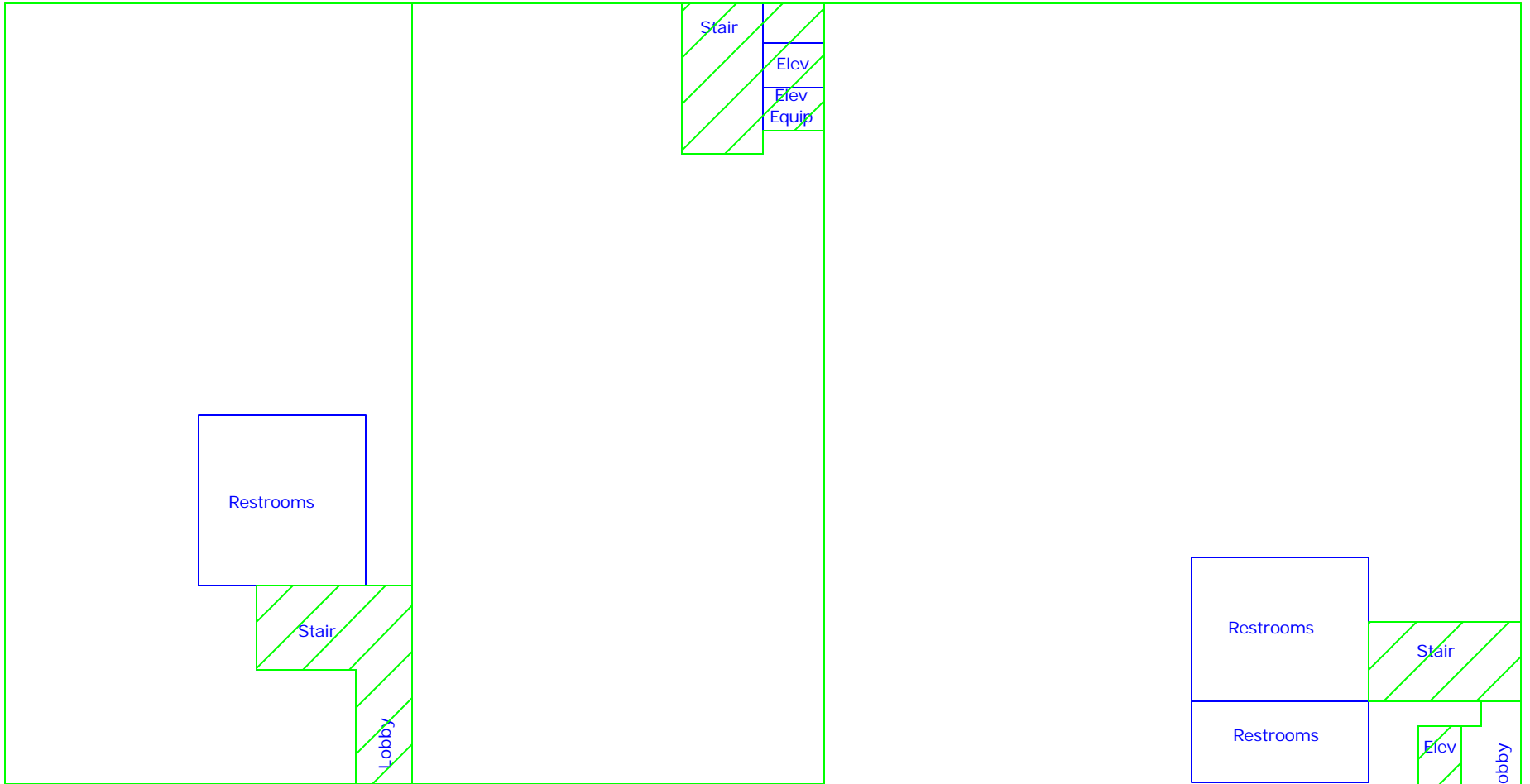
For Further Information Please Contact:

Carl Berg
408-725-0700

berg@missionwest.com

Ray Marino
408-725-7632

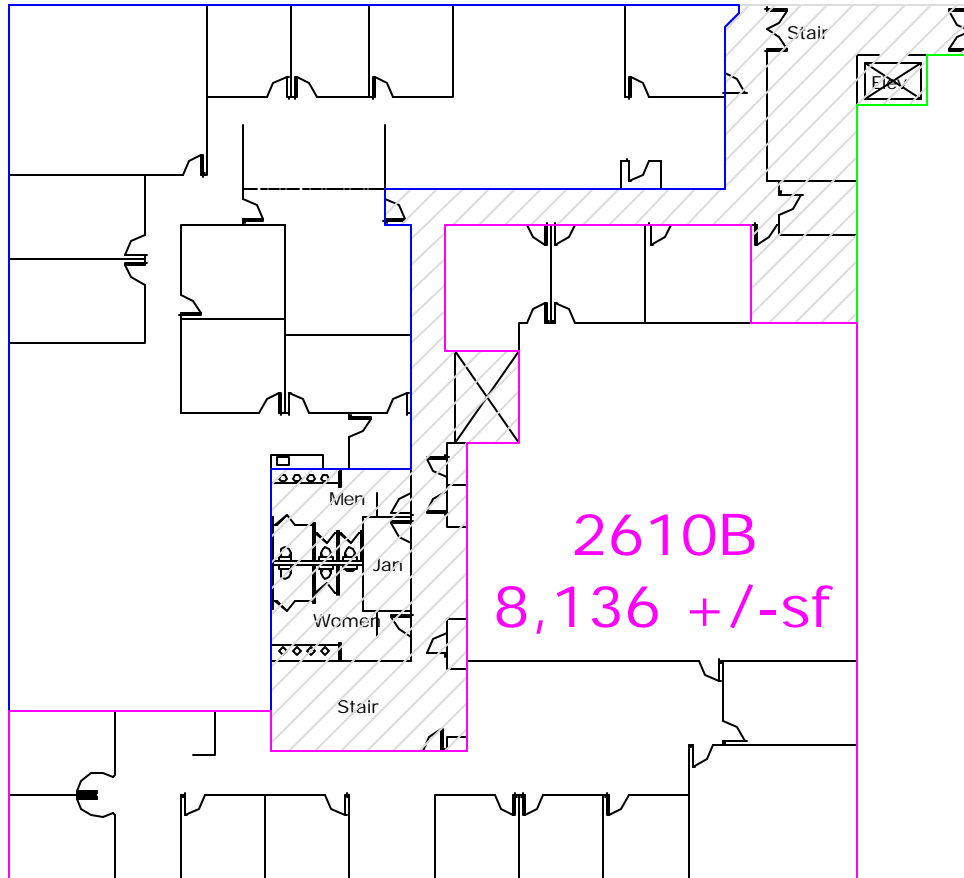
rmarino@missionwest.com



2600-2610 N.
1st St
35,828 sf

2nd Floor Access
Not Included

2610A
7,953 +/-sf



2610B
8,136 +/-sf

2600-2610 N. 1st St
2nd Floor

2600A
22,684 +/-sf

