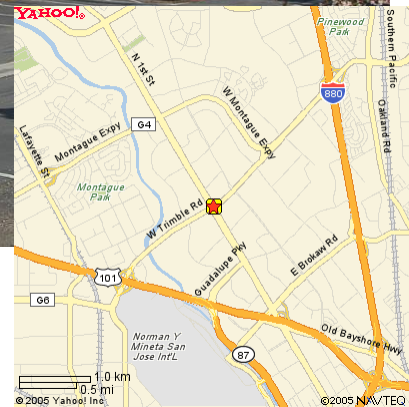


MISSION WEST PROPERTIES, Inc.

2610 N. 1st Street, San Jose



Available Space: 1) 3,000 sf (2nd Floor)

- Divisible to 8,000 sf +/-
- Available Now
- Parking 3.5/1,000
- Power 300 amps @ 480 volts
- Remodel to suit Tenant's Requirements
- "NNN" \$0.138 psf/mo (Property Taxes, Insurance, and Gardening)
- Access via lockbox
- Excellent Corner Location for Signage @ Trimble and N. 1st St.
- Easy Access to Highways 101/880, Light Rail, Mineta (San Jose) Airport and Downtown San Jose

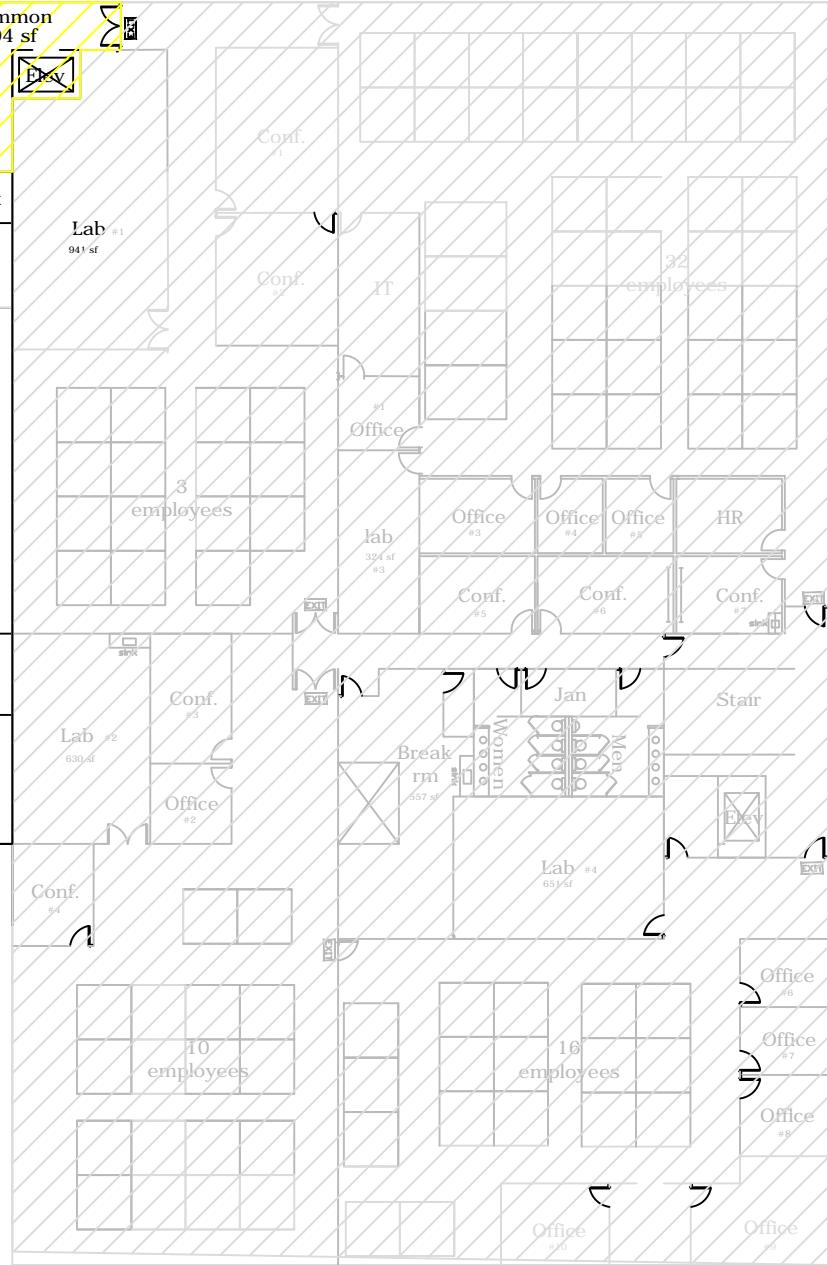
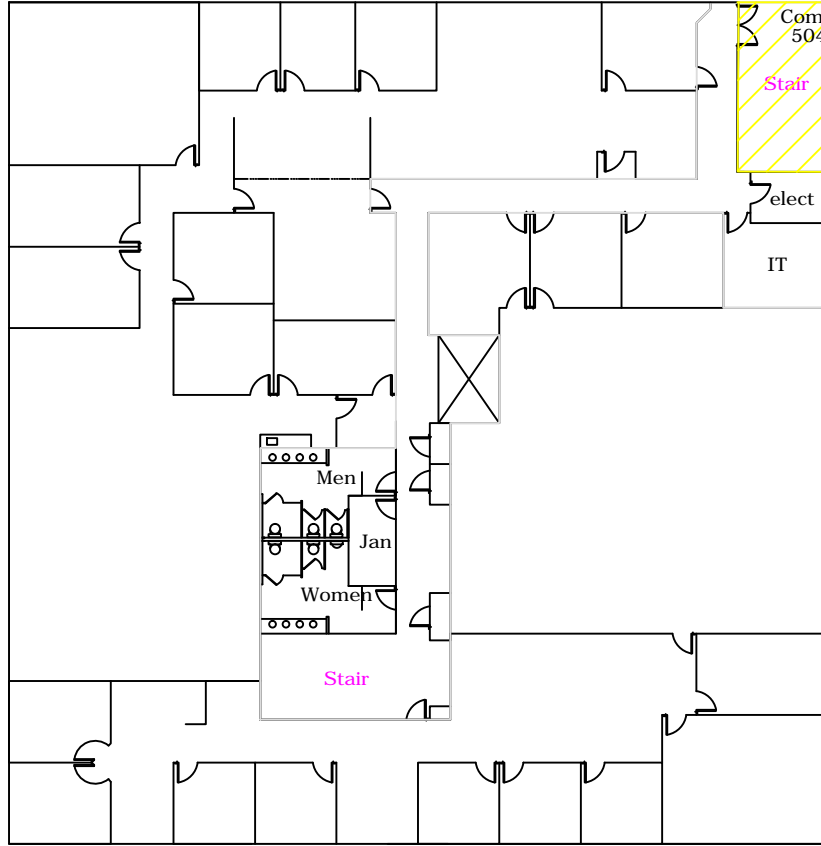
For Further Information Please Contact:

Carl Berg
408-725-0700

berg@missionwest.com

Ray Marino
408-725-7632

rmarino@missionwest.com



2600-2610 N. 1st St
 2nd Floor
 15,254 sf +/-sf