

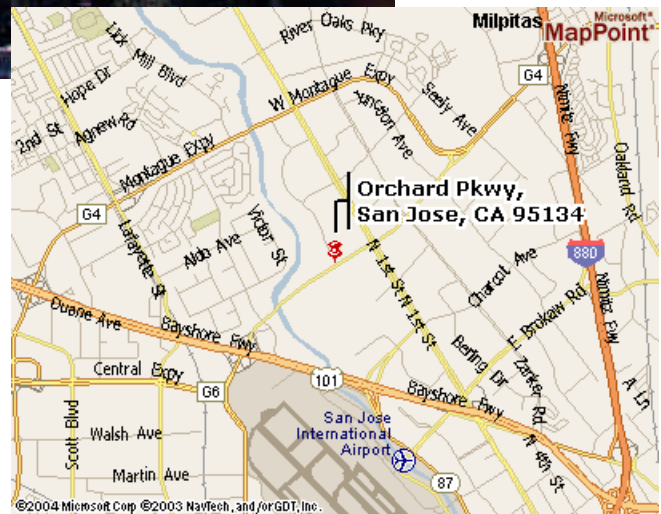


MISSION WEST PROPERTIES, INC.

2610 Orchard Parkway, San Jose



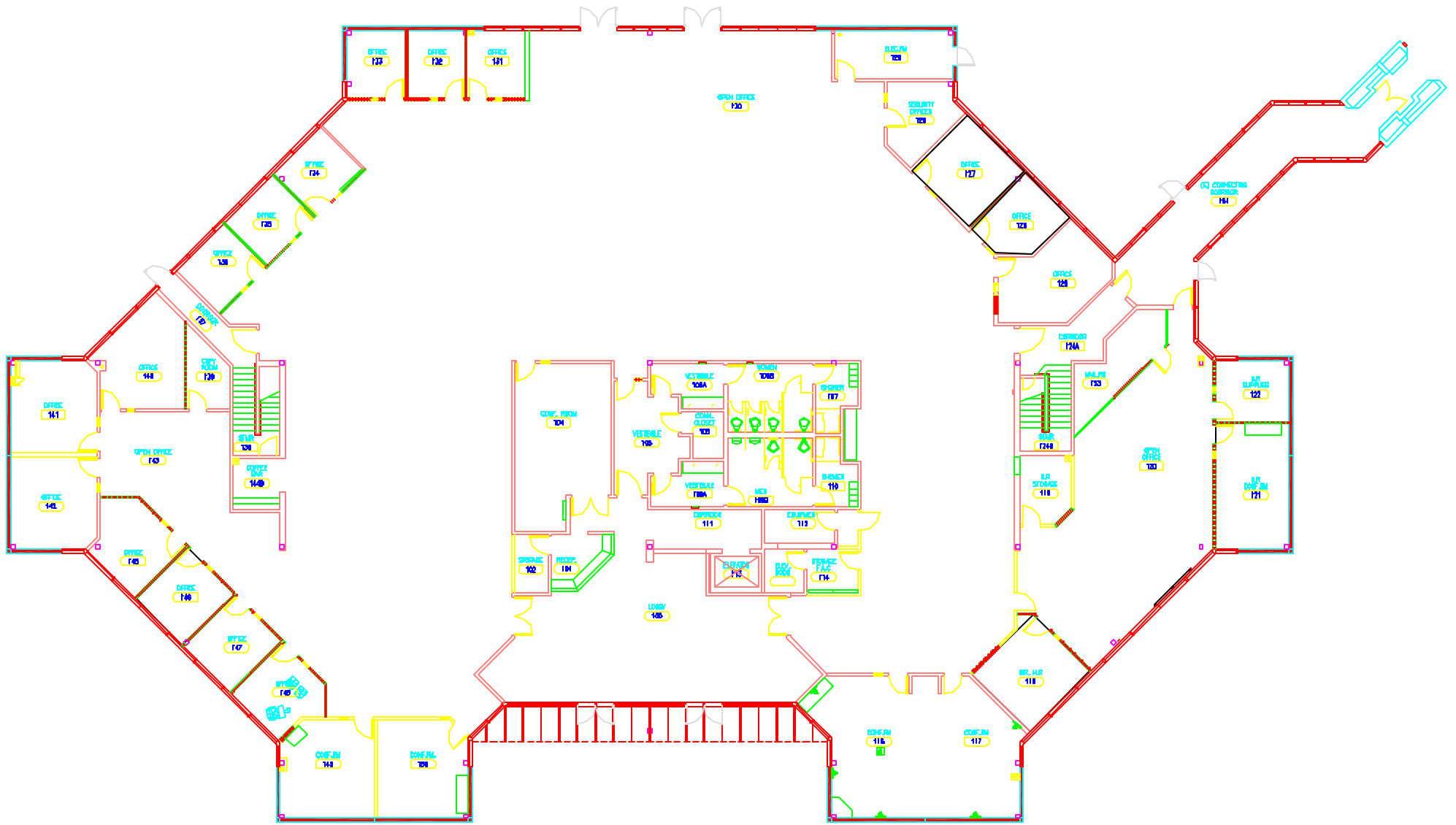
- Available Space: 54,093 sf
- Parking 3.5/1000 rsf
- Power: 2,000 amps @ 480 volts
- Rent Negotiable; Available Now
- “NNN” \$0.148 psf / mo
(Prop Taxes, Ins. & Landscaping)
- Expandable to 200,000+/-
- New Interiors
- Access via Lockbox



For Further Information Please Contact:

Carl Berg
(408) 725-0700
berg@missionwest.com

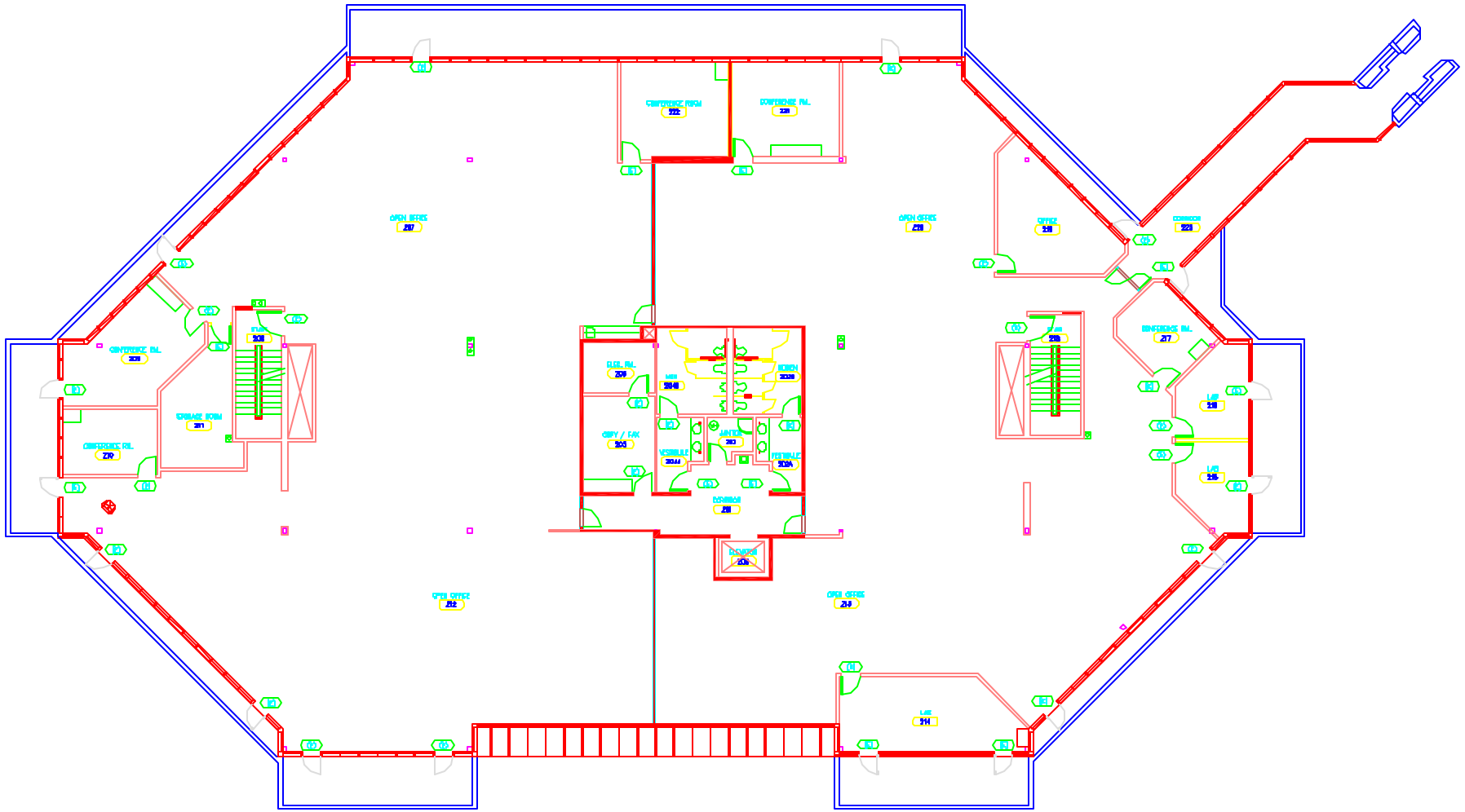
Ray Marino
(408) 725-7632
rmarino@missionwest.com



2610 ORCHARD PARKWAY
San Jose, CA



FIRST FLOOR PLAN
18,031 +/- Sq Ft



2610 ORCHARD PARKWAY
San Jose, CA



SECOND FLOOR PLAN
18,031 +/- Sq Ft

