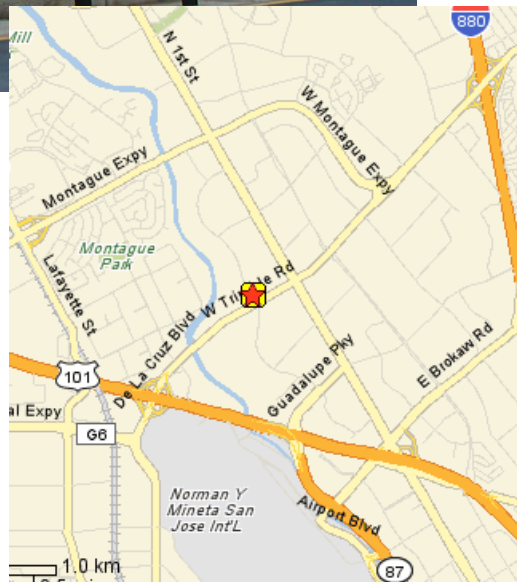


# MISSION WEST PROPERTIES, Inc.

2630 Orchard Parkway, San Jose



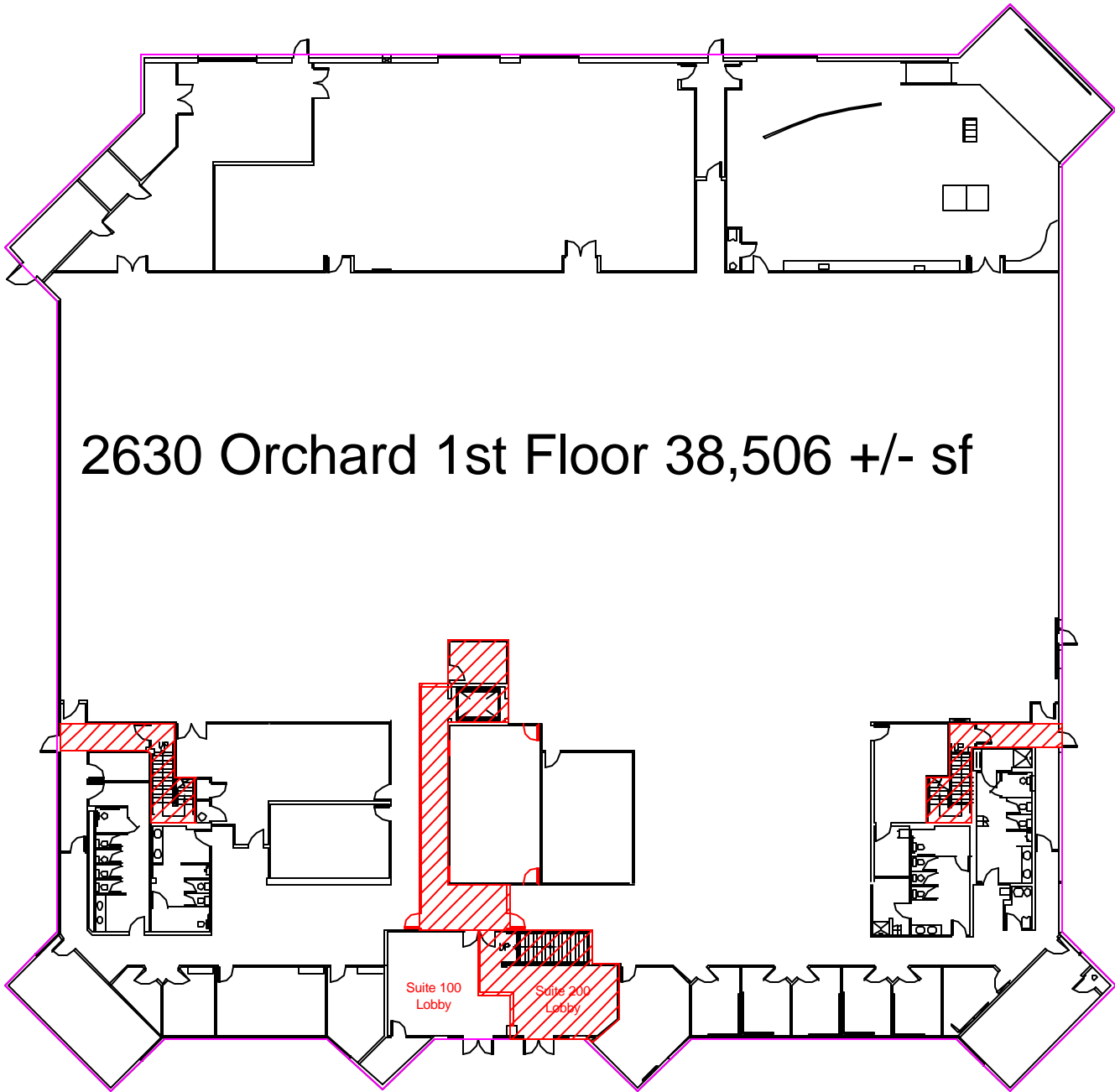
- Available Space: 60,633 sf
- Parking 3.5/1,000 rsf
- Power: 2,000 amps @ 480 volts
- Rent Negotiable, Available Now
- "NNN" \$0.148 psf/mo  
(Prop Taxes, Ins. & Landscaping)
- Expandable to 200,000 +/- sf
- Divisible to 22,127 sf on 2<sup>nd</sup> floor
- New Interiors, Plug & Play Potential
- Call to Tour Building



For Further Information Please Contact:

Carl Berg  
408-725-0700  
[berg@missionwest.com](mailto:berg@missionwest.com)

Ray Marino  
408-725-7632  
[rmarino@missionwest.com](mailto:rmarino@missionwest.com)



# 2630 Orchard 2nd Floor

22,127 +/- Sq Ft including 1/2 of  
common Telco & Ground Floor  
Lobby/Access

Telco  
567 +/-

