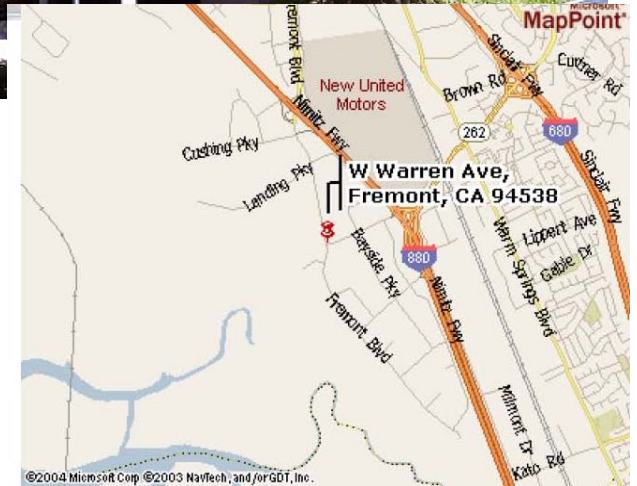




3481 West Warren, Fremont

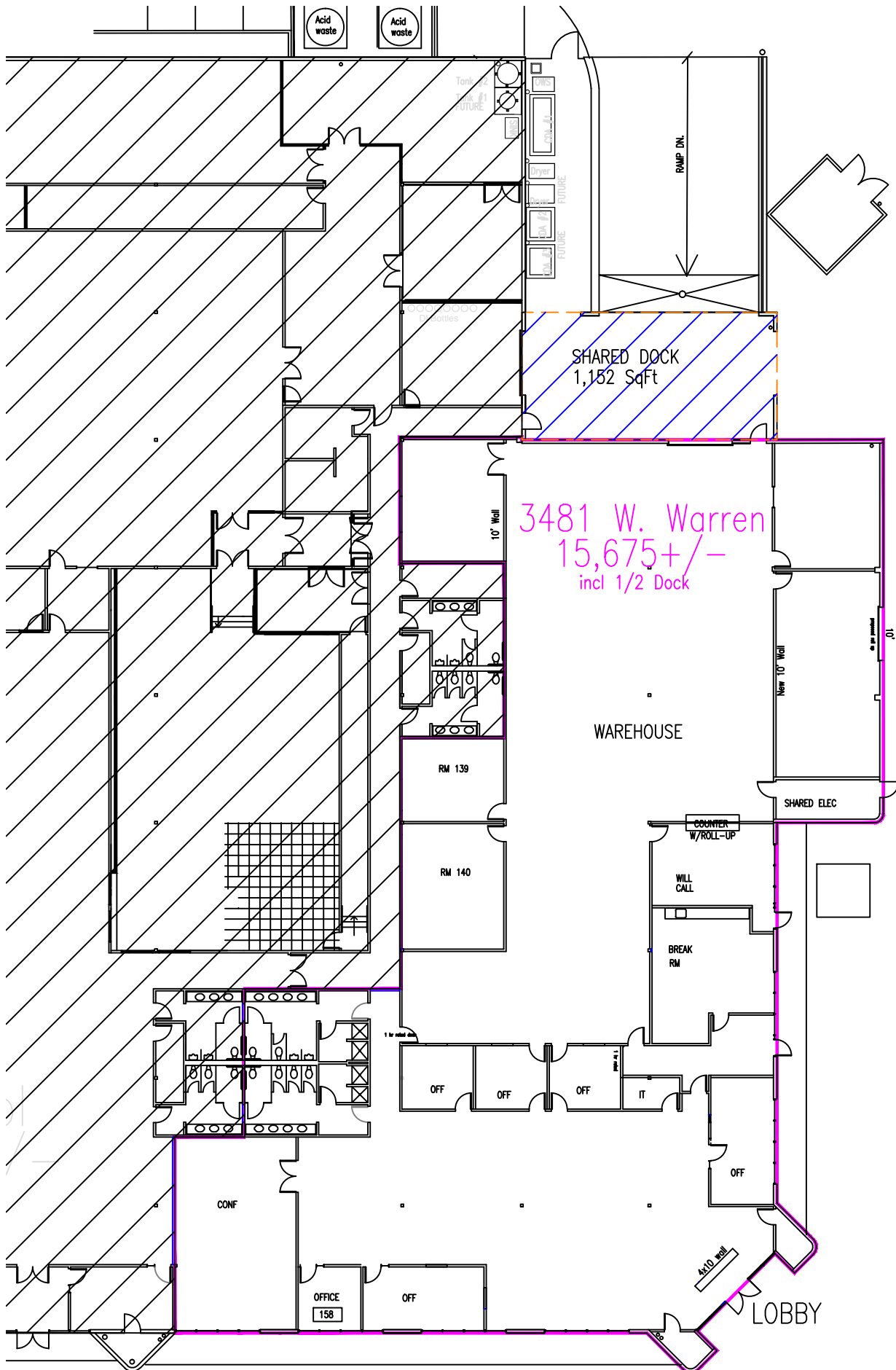


- Available Space: 15,675 +/- sf
- Parking 3.0/1000 rsf
- Power: 800+/- amps @ 480 volts
- Rent Negotiable
- "NNN" \$0.159 psf / mo(Prop Taxes, Ins. & Landscaping)
- Call to Tour, Avail Nov.-Dec. 2011

For Further Information Please Contact:

Carl Berg
(408) 725-0700
berg@missionwest.com

Ray Marino
(408) 725-7632
rmarino@missionwest.com



SHARED DOCK
1,152 SqFt

3481 W. Warren
15,675+/-
incl 1/2 Dock

WAREHOUSE

RM 139

RM 140

CONF

OFFICE
158

OFF

OFF

OFF

OFF

IT

OFF

COMPUTER
W/ROLL-UP

WILL
CALL

BREAK
RM

SHARED ELEC

LOBBY

Acid
waste

Acid
waste

Tank
Future

FUTURE

RAMP DN

10' Wall

New 10' Wall

4x10 wall