

MISSION WEST PROPERTIES, Inc.

55 W. Trimble, San Jose



Available Space: 91,722 sf

1st Floor: 60,530 sf

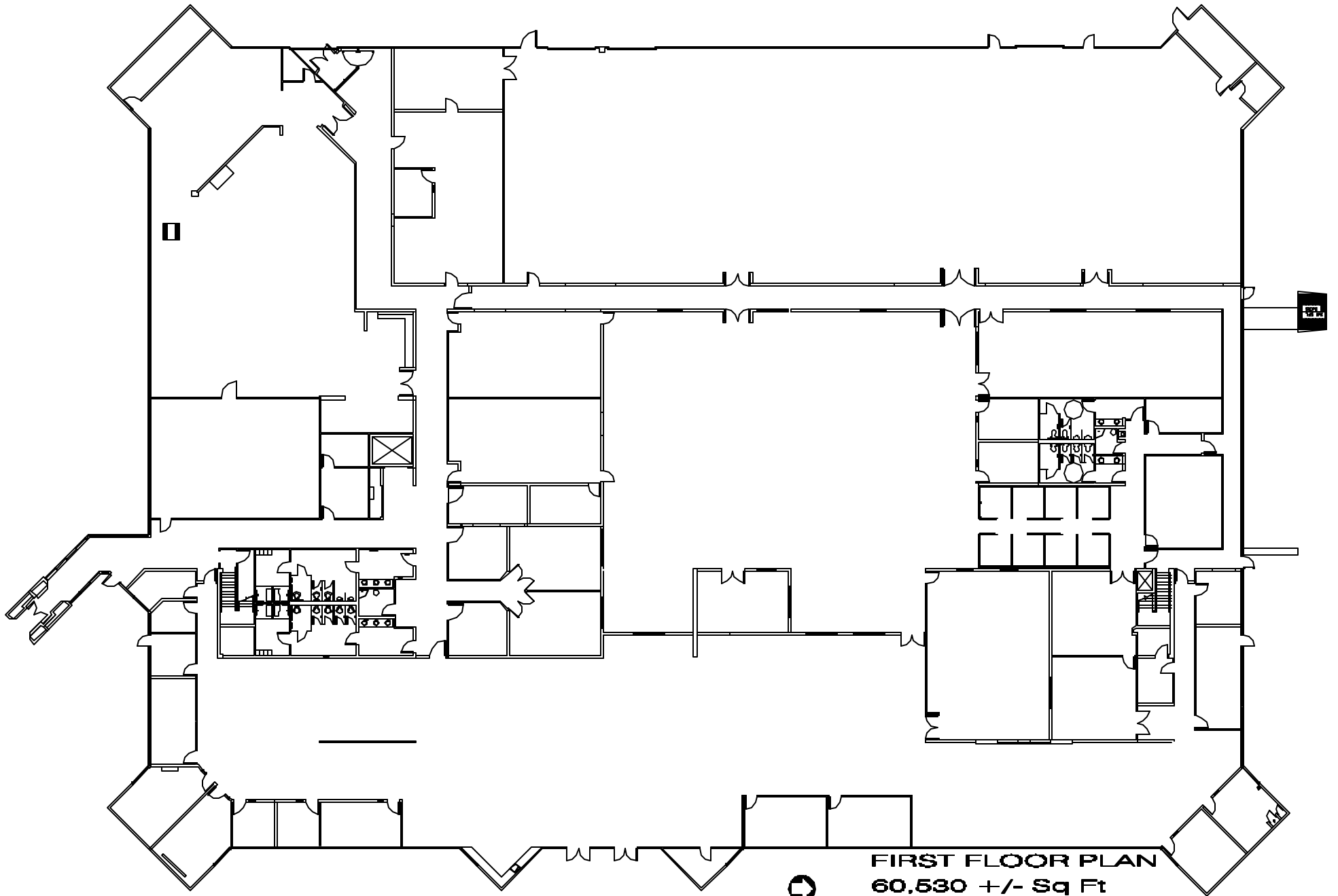
2nd Floor: 31,192 sf

- Available Now, Rent Negotiable
- Easy Access to Highways 237, 101, 880, and San Jose Norm Mineta Airport
- Parking 3.3/1000 sf
- Expandable to 200,000+

For Further Information Please Contact:

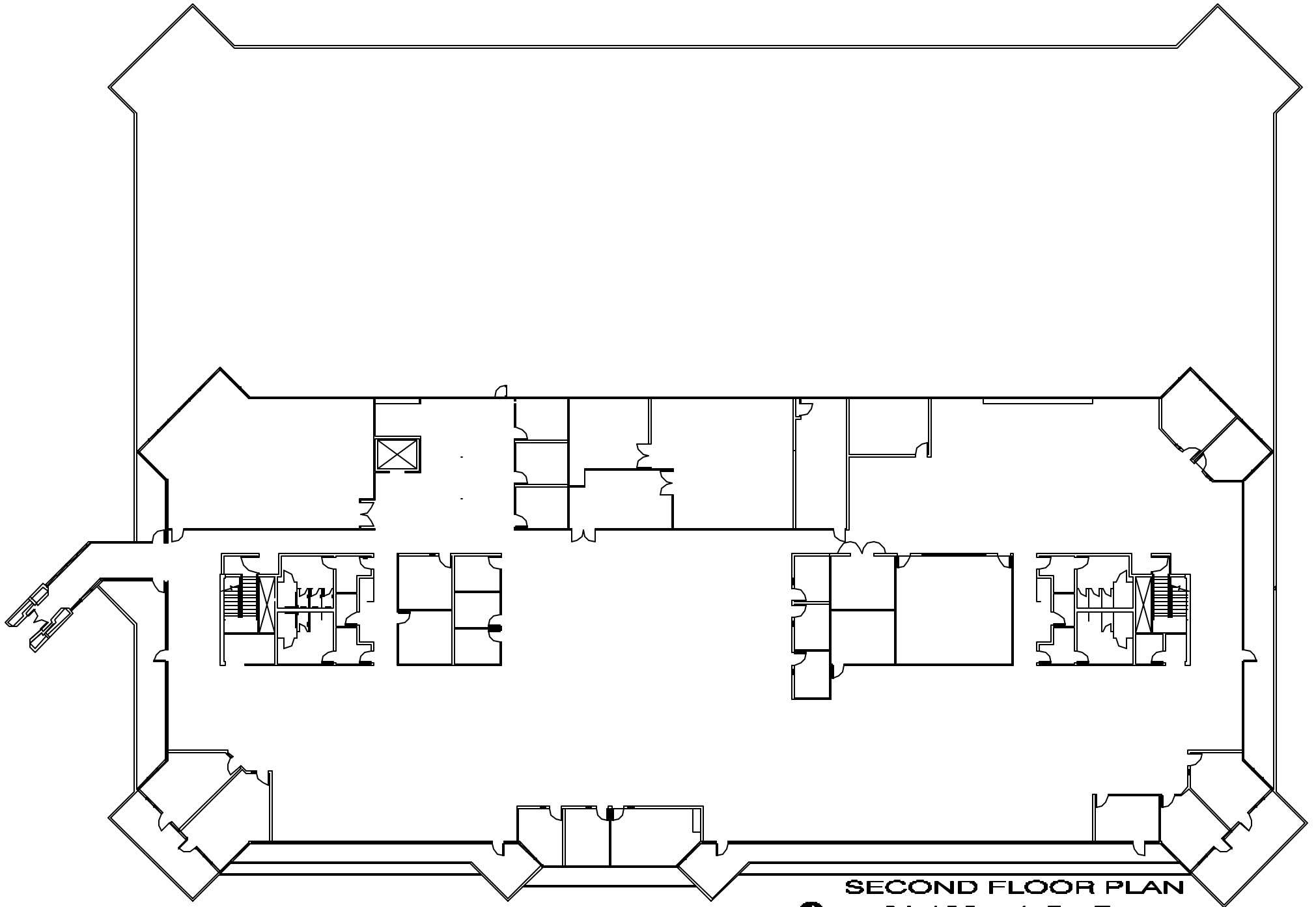
Carl Berg
408-725-0700
berg@missionwest.com

Ray Marino
408-725-7632
rmarino@missionwest.com



55 WEST TRIMBLE ROAD

FIRST FLOOR PLAN
60,530 +/- Sq Ft



55 WEST TRIMBLE ROAD



SECOND FLOOR PLAN
31,192 +/- Sq Ft